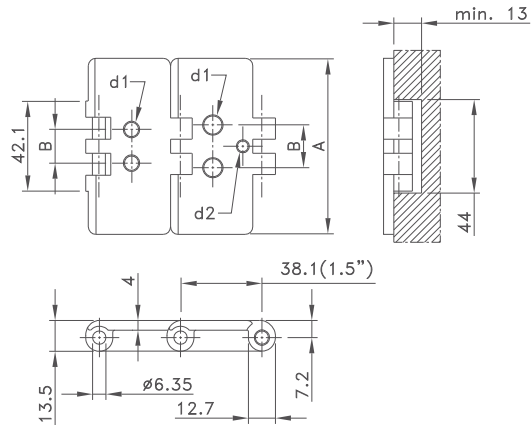
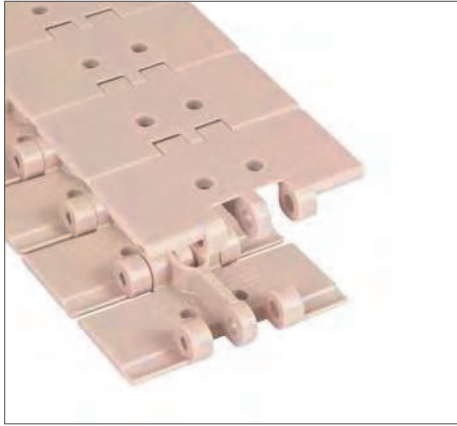


Straight Run Vacuum



Chain Type	Code Number	Plate Width A		Weight kg/m	Distance Between Holes B mm	Hole Diameter d1 mm	Working Load (max.) N (21°C)	Backflex Radius (min) mm	Plate Thickness mm
		mm	inch						
LF-Acetal									
LF 820-K325 V2**	L0820638301	82.5	3.25	0.83	19	6.5	1230	40	4.0
LF 820-K350 V2**	L0820692431	88.9	3.50	0.87	45	4.0			
LF 820-K450 V2 I30**	L0820613392	114.3	4.50	1.03	30	8.0			
LF 820-K450 V2 I50**	L0820670221	114.3	4.50	1.03	50	8.0			
LF 820-K325 V3***	L0820615961	82.5	3.25	0.83	20	7.9			

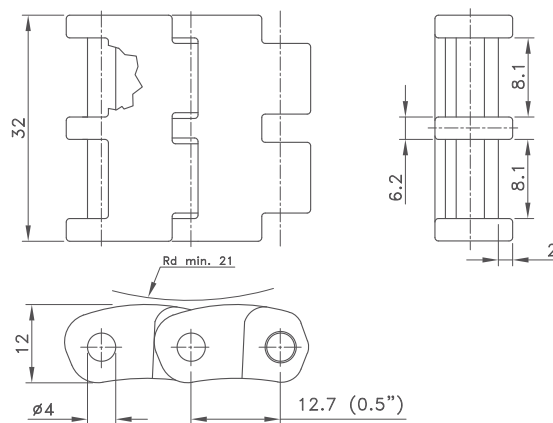
** 2 holes

*** 3 holes. Hole diameter 3rd hole (d2) is 4.4 mm

Standard length: 3.048 m - 10 feet (80 links)

Minimum order quantity 30.48 m - 100 feet.

Straight Run Miniature



Chain Type	Code Number	Plate Width A		Weight kg/m	Working Load (max.) N (21°C)	Backflex Radius (min) mm	Plate Thickness mm
		mm	inch				
D-Acetal							
ZN 1108*	L1108WZN	32.0	1.26	0.51	800	21	12.0
SS 1108**	L1108WSS						

* With zinc plated pins

** With stainless steel pins

Standard length: 5 m - 16.4 feet (395 links).

These chains are recommended for packaging machines of pharmaceutical, cosmetic and food products; if installed to the base chain, it facilitates product head transfers.